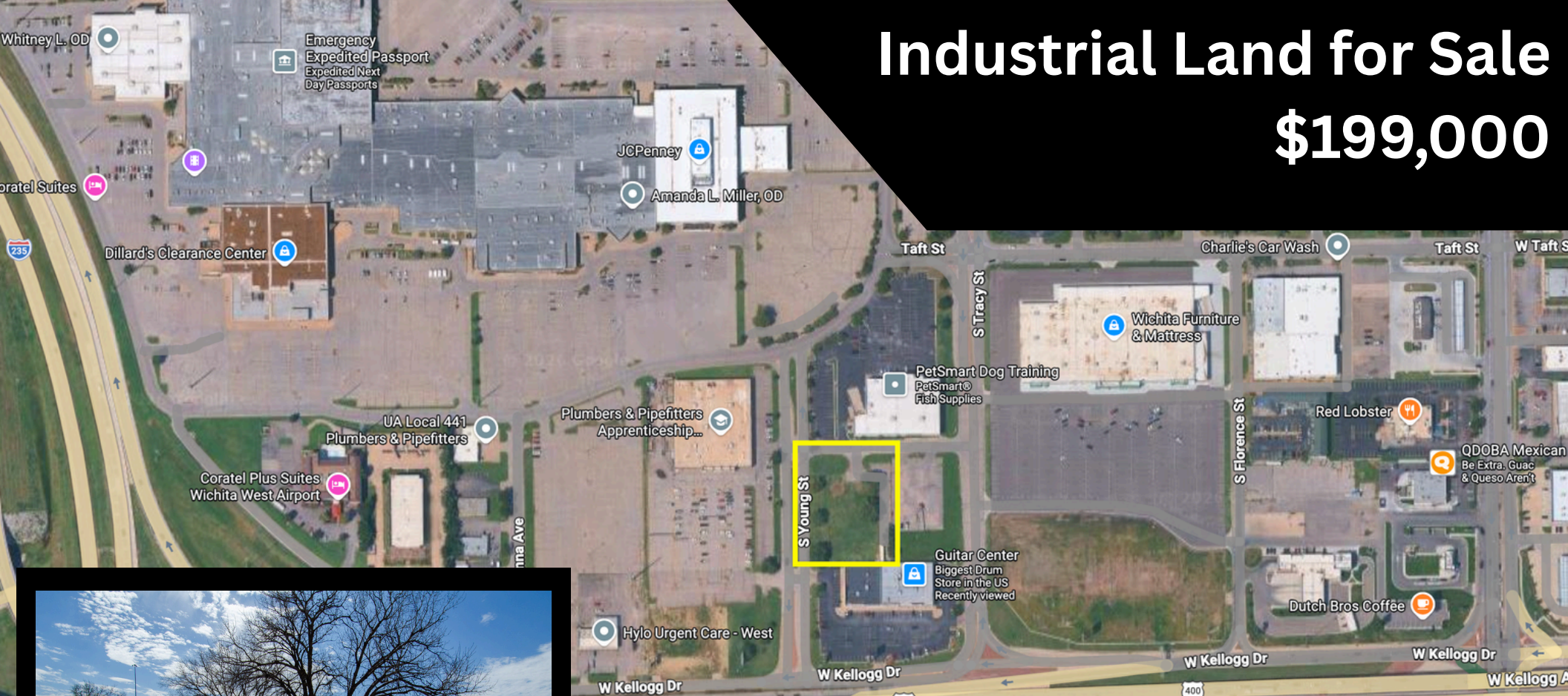


Industrial Land for Sale

\$199,000



1.14 AC Development Land Near Towne West Industrial Redevelopment | Easy Access to US-400

1.14 acres of development land located near the new Wichita Business Park redevelopment and directly behind a retail center anchored by Guitar Center and Skechers.

The surrounding Towne West Mall property is currently being redeveloped into a large industrial campus, bringing significant investment and employment growth to the area. Ideal for industrial, flex warehouse, truck parking or contractor use. Property includes an existing paved entrance.

Contact:

Phillip Graves
316-644-6260
phil@blowtorchre.com
Blowtorch CRE Group at Heritage 1st Realty